

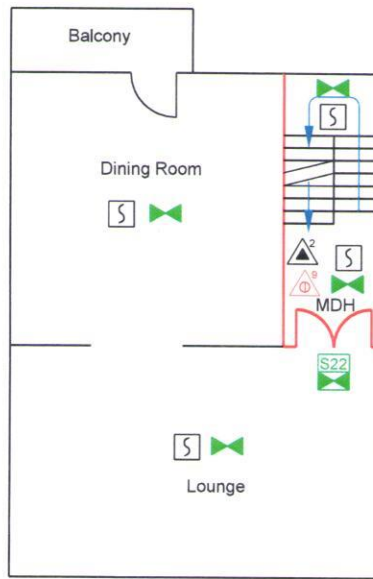
- Legend: To BS1635 1990
- 30 mins Fire Resisting Wall/Door
  - Fire Curtain Linked to Fire Alarm
  - Fire Alarm Control Panel
  - Fire Alarm Call Point
  - Carbon Dioxide Fire Extinguisher
  - Water Fire Extinguisher

- Legend: To BS1635 1990
- Fire Blanket
  - Illuminated Fire Exit Sign
  - Area Covered by Emergency Lighting
  - Area Covered by Smoke Detection
  - Magnetic Door Holder c/w "Automatic Door Keep Clear" Sign

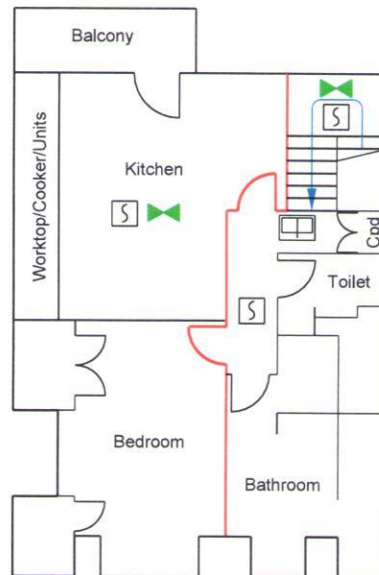
Drawing Number:- A-009-0033-B1  
 Drawn by:- S Blackwell  
 Checked by:- A Mitchell  
 Date :- 27th September 2015  
 Consultant:- A Stanley  
 Sheet:-1 of 2  
 Scale:-1:100 @ A3 Size

Basement to First Floor  
  
 Dover Street  
 London  
 W1G 4LR

**AM FIRE CONSULTANTS**  
 Newlands, 1 Virenden Way, Little Common, Bexhill-on-Sea, TN39 4NZ  
 Telephone: Fax: 01424 848220 - e-mail: info@amfire.co.uk



Second Floor



Third Floor

Legend: To BS1635 1990

- 30 mins Fire Resisting Wall/Door
- Fire Curtain Linked to Fire Alarm
- Fire Alarm Control Panel
- Fire Alarm Call Point
- Carbon Dioxide Fire Extinguisher
- Water Fire Extinguisher

Legend: To BS1635 1990

- Fire Blanket
- Illuminated Fire Exit Sign
- Area Covered by Emergency Lighting
- Area Covered by Smoke Detection
- Magnetic Door Holder c/w "Automatic Door Keep Clear" Sign

Drawing Number:- A-009-0033-B1

Drawn by:- S Blackwell  
 Checked by:- A Mitchell  
 Date :- 27th September 2015  
 Consultant:- A Stanley  
 Sheet:- 2 of 2  
 Scale:- 1:100 @ A3 Size

This drawing, its contents & its associated properties are the property of AM Fire Consultants. No reproduction is permitted without prior written consent by the management of AM Fire Consultants.

Basement to First Floor

Dover Street  
 London  
 W1G 4LR

AM FIRE CONSULTANTS

Newlands, 1 Wealden Way, Little Common, Bexhill-on-Sea, TN39 4JZ  
 Telephone/ Fax: 01424 848220 - e-mail: info@amfire.co.uk

